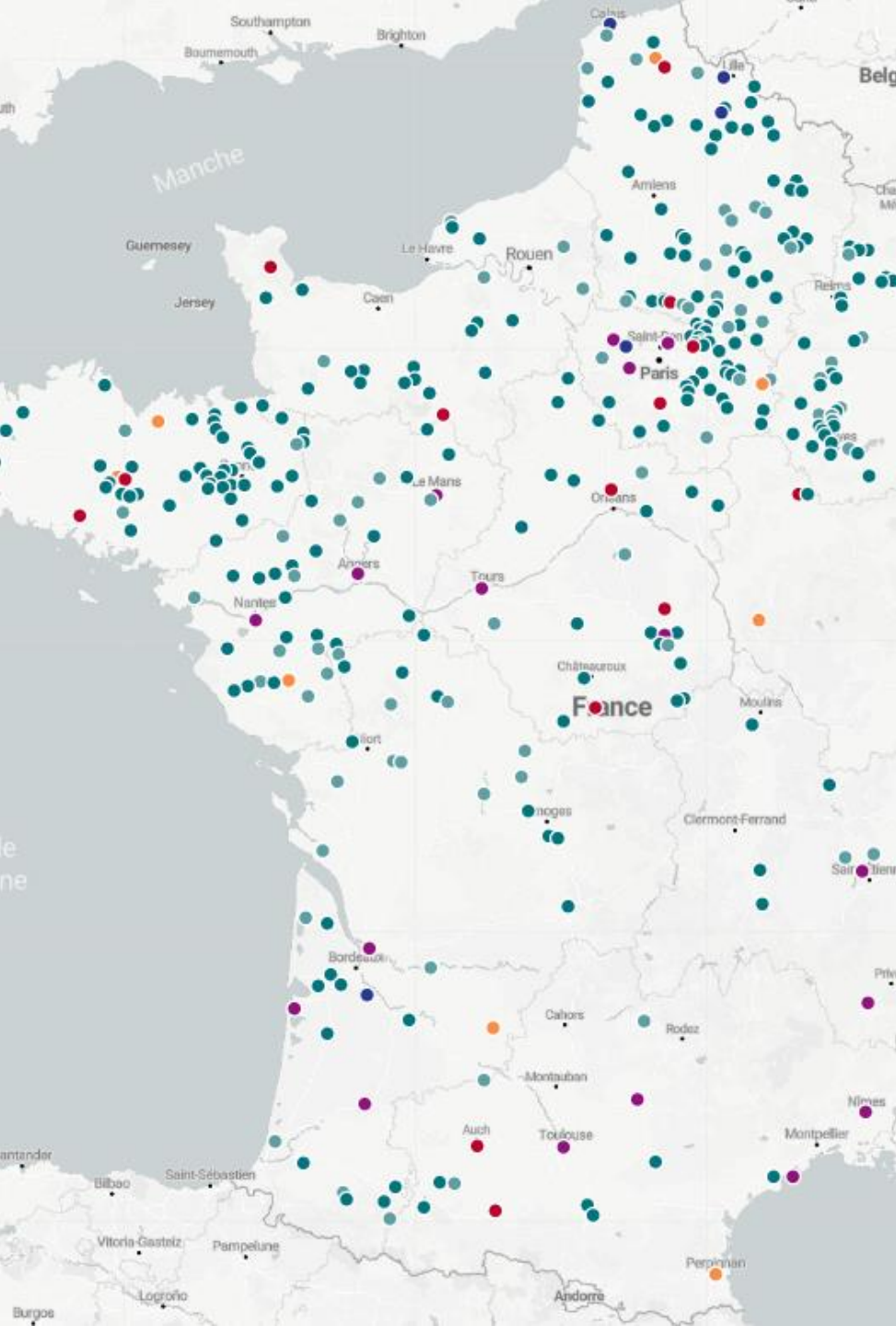




# Biomethane in France: Facilitating market access to new gases

Thierry Trouvé, CEO of GRTgaz  
EEF, Strasbourg, October 18th, 2022

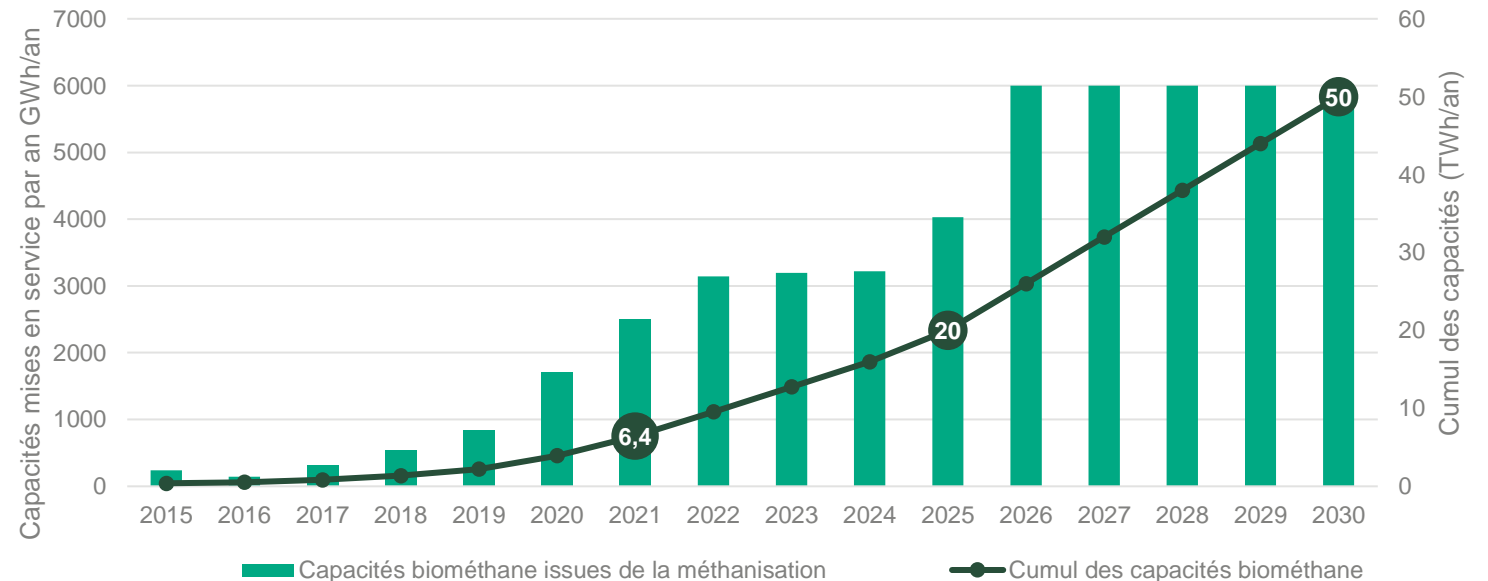




# Biomethane: Sustainable growth of a dynamic sector

- **477 sites injecting biomethane** into the distribution/transmission networks
- **8,15 TWh of installed capacity** to date (~ 2% of French gas consumption)
- **20 TWh planned capacity by 2025** and **60 TWh by 2030** : 50 TWh thanks to new support mechanisms + 10 TWh from new sectors (waste pyrogasification, synthetic methane)

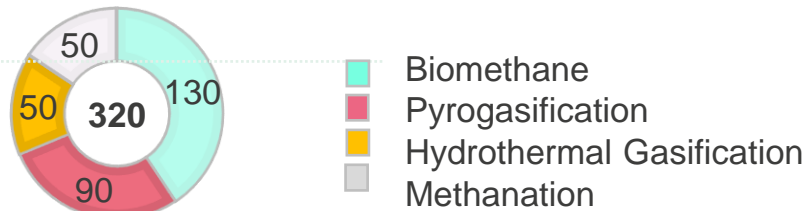
2030 Trajectory for Renewable Gases



# 2030 targets: A comprehensive set of support mechanisms

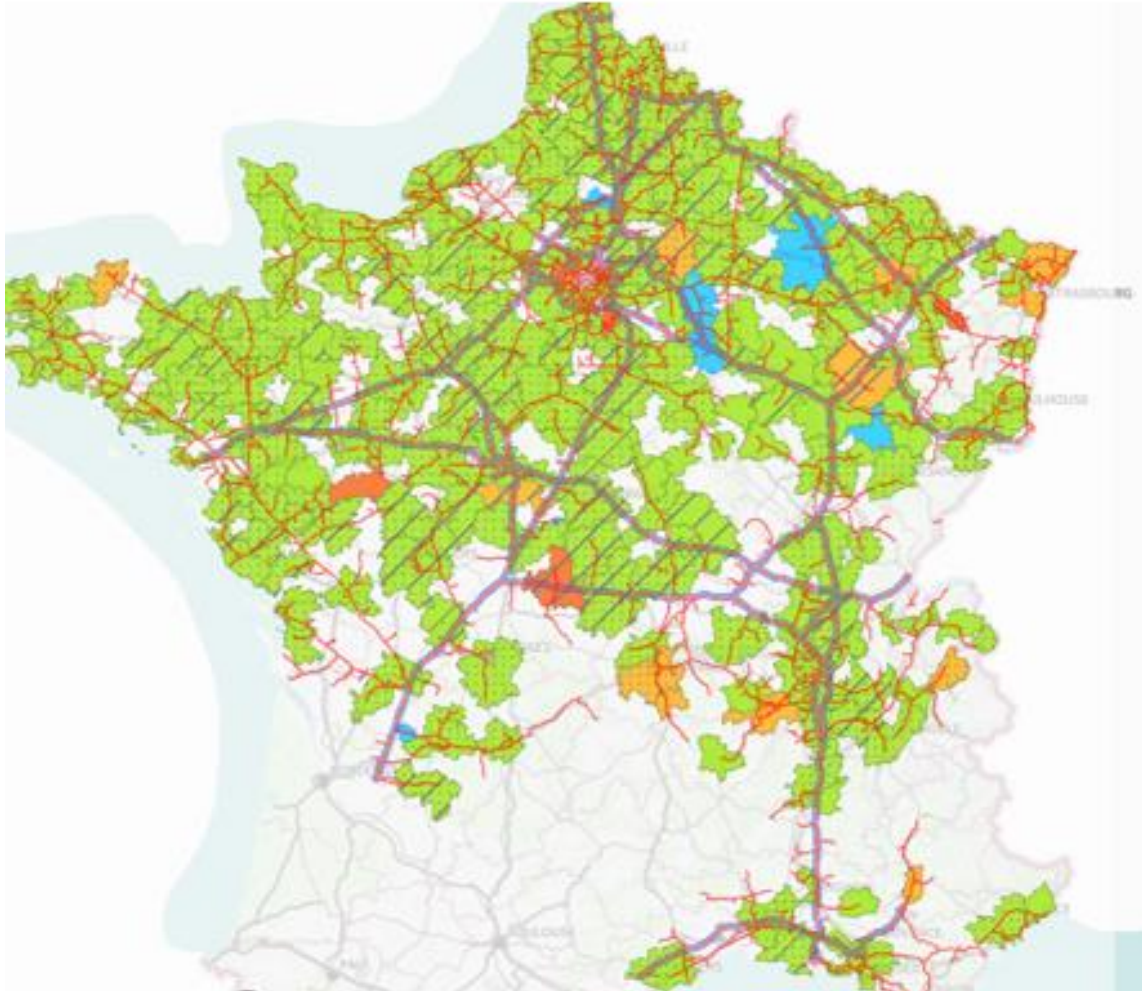
- **Feed-in tariff for projects < 25 GWh/year**
- **Call for tenders for projects > 25 GWh/year**
- **Biogas Production Certificates:** mandate on gas suppliers to incorporate biomethane
- **Contracts for the testing of innovative technologies** (pyrogasification, hydrothermal gasification)

Renewable & Low carbon Methane Production Estimation by 2050 (in TWh excluding hydrogen) in France



# “Right to injection”: Facilitating the integration of biomethane into the network

---



- “Egalim” Law (2018) - eases the biomethane facilities connection to gas networks:
  - “Injection right” - techno-economic conditions for the gas networks adaptation and breakdown of related costs between infrastructure operators and biomethane producers
  - “Zoning approach” - techno-economic potential map for 500 zones across France established by grid operators
- Injection of biomethane feasible over **75% of the French territory**
- **11 reverse flow installations in operation** and **30 under development**
- **Investment of €500 million** for network reinforcements from 2020 to 2028

# Looking ahead: Key policy asks

## Enshrine Targets Into Legislation

- Integrate the ambitious EU targets into EU law as well as into relevant national policies, to boost the consumption of biomethane in industry as well as in heavy-duty and maritime mobility.

## Tackle Remaining Barriers

- Strive to ensure an interoperable European market and cross-border trading of biomethane by establishing a European-wide GO system that integrates sustainability information.

## Maintain Public Support Mechanisms

- Maintain the public support mechanisms (in particular the feed-in-tariffs for small-scale agricultural installations). Support schemes should cover all technologies, anaerobic digestion but also new technologies such as pyrogasification and hydrothermal gasification.

## Enhance Cooperation

- Encourage exchanges of best practices between Member States to fully take advantage of biomethane's tremendous potential.





**Thank you**